
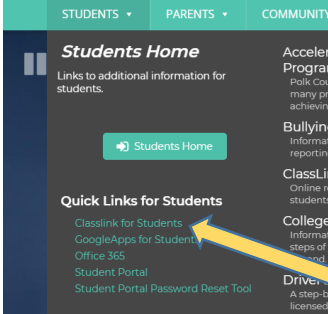
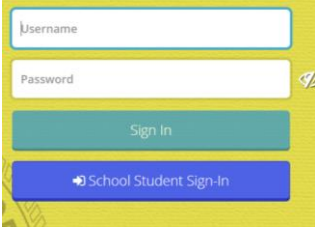
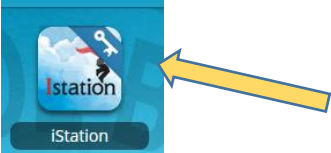
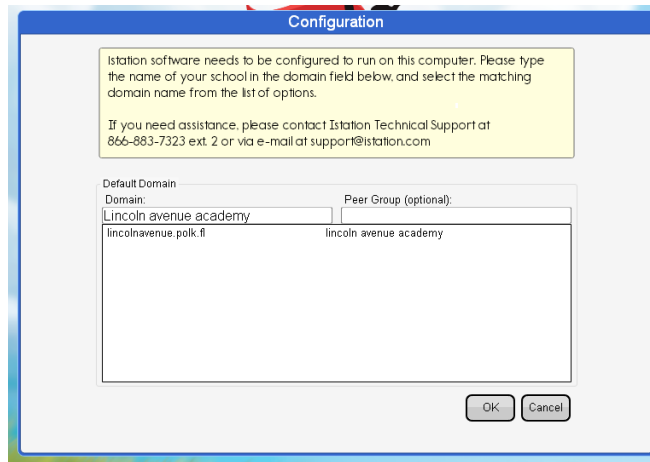


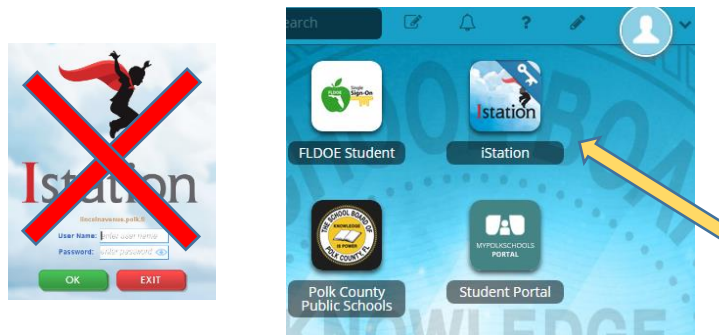
This visual guide will assist you in setting up and using Istation Home, which will allow your child to access the Istation Reading program.

<p>Step 1: Go to the web site www.polkschoolsfl.com</p>		
<p>Step 2 Click on students at the top of the main page and click on Classlink for students</p>		
<p>Step 3 Log-in using your student's login information provided by their teacher.</p> <p>Your student's login information is:</p> <p>Username: _____</p> <p>Password: _____</p>	<p>If this sign-in screen shows up you will need to add the @mypolkschools.net behind the username.</p> <p>Polk County Schools Federation Service (PRD)</p> <p>Sign in with your organizational account</p> <p><input type="text" value="johndoe@example.com"/></p> <p><input type="password" value=""/></p> <p><input type="button" value="Sign in"/></p>	<p>If this sign-in screen pops up, you will only need to write the username without @mypolkschools.net</p> 
<p>Step 4 Click on the iStation icon.</p>		
<p>Step 5 Click the appropriate button to download iStation for your device.</p> <p>**iStation app is not supported on Smart Phones.</p>	<p>Windows</p> <p><input type="button" value="Download: Istation for Windows"/></p> <p><input type="button" value="Download on the App Store"/></p> <p><input type="button" value="GET IT ON Google Play"/></p> <p><input type="button" value="Download: Istation for Macintosh"/></p> <p><input type="button" value="Visit the Google Play store"/></p> <p><input type="button" value="Installation Instructions for Windows (421KB)"/></p> <p><input type="button" value="Installation Instructions for Windows - Español (418KB)"/></p> <p><input type="button" value="Installation Instructions for Mac (444KB)"/></p> <p><input type="button" value="Installation Instructions for Mac - Español (441KB)"/></p>	

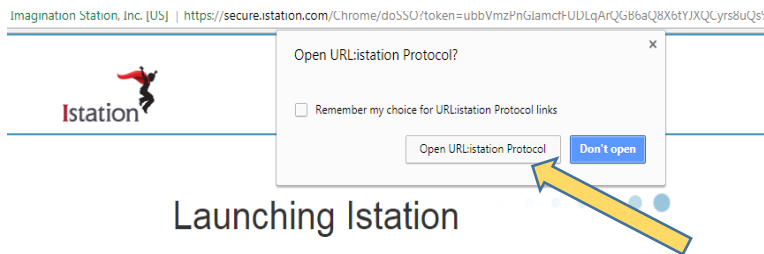
Step 6
Type **Lincoln Avenue Academy** in for domain. Choose **lincolnavenue.polk.fl** and click **ok**.



Step 7
Istation will load to their main screen for both computers and tablets. However, you will need to **go back to the classlink** tab (see step 2, 3 and 4) and click on the iStation icon



Step 8
Click **Open URL istation protocol** or **open app**



Step 9
Click on the **Reading with ISIP** or **Math with ISIP** based on your student's identified academic needs.

